

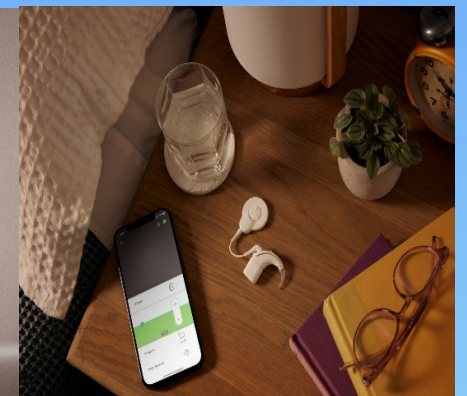
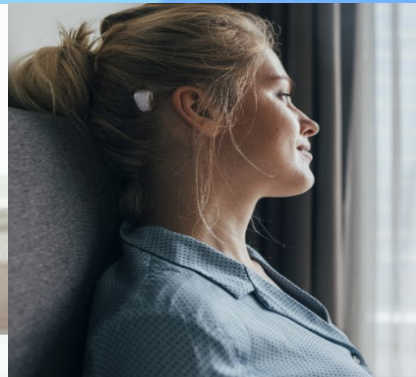


GIG  
CYMRU  
NHS  
WALES

Pwyllgor Gwasanaethau Iechyd  
Arbenigol Cymru (PGIAC)

Welsh Health Specialised  
Services Committee (WHSSC)

# THE FUTURE OF SPECIALIST HEARING IMPLANT DEVICE SERVICES IN SOUTH EAST WALES, SOUTH WEST WALES AND SOUTH POWYS



# WHAT WOULD WE LIKE TO TALK TO YOU ABOUT?

We would like to talk with people across South East Wales, South West Wales and South Powys on the ideas we have about how specialist hearing implant device services could be provided in the future.

# WHO IS LEADING THE WORK?

This work is being led by Welsh Health Specialised Services Committee (WHSSC) in conjunction with the Health Boards in:

- South West Wales,
- South East Wales, and
- South Powys.



# HEARING LOSS

- Hearing loss affects over 10 million people across the United Kingdom.
- It is a common condition affecting around 1 in 7 of the population.
- As we get older, there is a greater chance of increases in hearing loss and many people are offered a hearing aid.
- Not everyone is able to wear a hearing aid and patients may be sent to a specialist hearing centre to be assessed whether they should have a hearing implant.

# WHY WOULD SOMEONE NEED A HEARING IMPLANT ?

- Deafness in one or both ears
- Hearing loss due to the shape or size of the ear canal
- Hearing loss for a medical reason
- Patients may be offered to wear a Cochlear Implant or a Bone Conduction Hearing Implant (BCHI) device

<b>Cochlear Implant</b>	<ul style="list-style-type: none"><li>• A cochlear implant stimulates the nerves in the inner ear. It is implanted in the ear.</li></ul>
<b>Bone Conduction Hearing Implant</b>	<ul style="list-style-type: none"><li>• A Bone Conductor Hearing Implant(BCHI) is a hearing aid which uses bone conduction to help sound get to the inner ear.</li></ul>





# WHERE ARE SERVICES PROVIDED NOW?

## **Cochlear Implant Service**

- Princess of Wales Hospital, Cwm Taf Morgannwg University Health Board
- University Hospital of Wales, Cardiff and Vale University Health Board

## **Bone Conduction Hearing Implant Service**

- Neath Port Talbot Hospital, Swansea Bay University Health Board
- University Hospital of Wales, Cardiff and Vale University Health Board
- Royal Gwent Hospital, Aneurin Bevan University Health Board



GIG  
CYMRU  
NHS  
WALES

Pwyllgor Gwasanaethau Iechyd  
Arbenigol Cymru (PGIAC)  
Welsh Health Specialised  
Services Committee (WHSSC)

# WHY DO WE NEED THIS CONVERSATION?

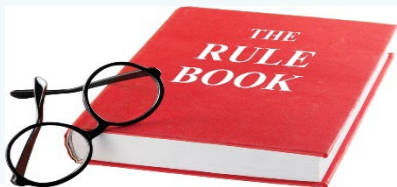
The service in South East Wales, South West Wales and South Powys face some current challenges:



British Cochlear Implant Group (BCIG) say that Consultants should undertake a minimum of 10 cochlear implants per surgeon, and that a centre should undertake a minimum of 15 BCHI per year. There are not enough patients to support this across multiple centres.



Patients needing hearing implants should have access to a range of clinicians and implants all in the same place – not all centres can offer this.



Because of the above issues, not all centres can meet the standards as set out by the British Cochlear Implant Group, and published guidance on BCHI.



The Bridgend Cochlear Implant service temporarily closed in 2019 with all patients currently being seen in Cardiff due to challenges in sustaining the workforce. There were no changes to where patients requiring a BCHI were seen.

# WHAT ARE WE RECOMMENDING?

To overcome the challenges outlined on the previous page, WHSSC would like to commission:

**A single implantable hearing device hub for both children and adults with an outreach support model.**

This would mean both Cochlear and BCHI Implants are fitted in a single centre.



# HOW DID WE GET TO THAT RECOMMENDATION?



We worked with clinical teams from the South East and South West Wales services to consider a number of options for future service delivery.



We asked a service from NHS England to assess all of the options against a set of agreed criteria.



We undertook a financial assessment of all of the options.

# WHAT WOULD THE CHANGE MEAN?

- Patients would have their surgery and hearing implant fitted in a single centre that would do all of this work for South East Wales, South West Wales and South Powys residents.
- Appointments with the team before the hearing implant has been fitted, and after the hearing implant has been fitted and programmed will take place closer to home (where they do now).
- Services would be managing a sufficient number of patients for staff to maintain their skills.
- There would be a large number of staff to ensure a sustainable delivery of service.

# WILL THE CHANGE AFFECT ME ?

The change will affect patients living in the following Health Board areas:

- Aneurin Bevan University Health Board
- Cardiff and Vale University Health Board
- Cwm Taf Morgannwg University Health Board
- Hywel Dda University Health Board
- Powys Teaching Health Board
- Swansea Bay University Health Board

# HAVE YOUR SAY

- Patients have already received a letter and questionnaire
- Clinical teams have received information
- Interested stakeholders can complete a questionnaire on line via (<https://forms.office.com/r/s8bSYTaU5K> ) or write to :

Cochlear Implant and BCHI engagement  
Welsh Health Specialised Services Committee  
Unit G1

Main Avenue 24

Treforest, Pontypridd CF37 5YL

Or alternately ([WHSSC.GeneralEnquiries@wales.nhs.uk](mailto:WHSSC.GeneralEnquiries@wales.nhs.uk))

**We would welcome your feedback by 14/02/2023**