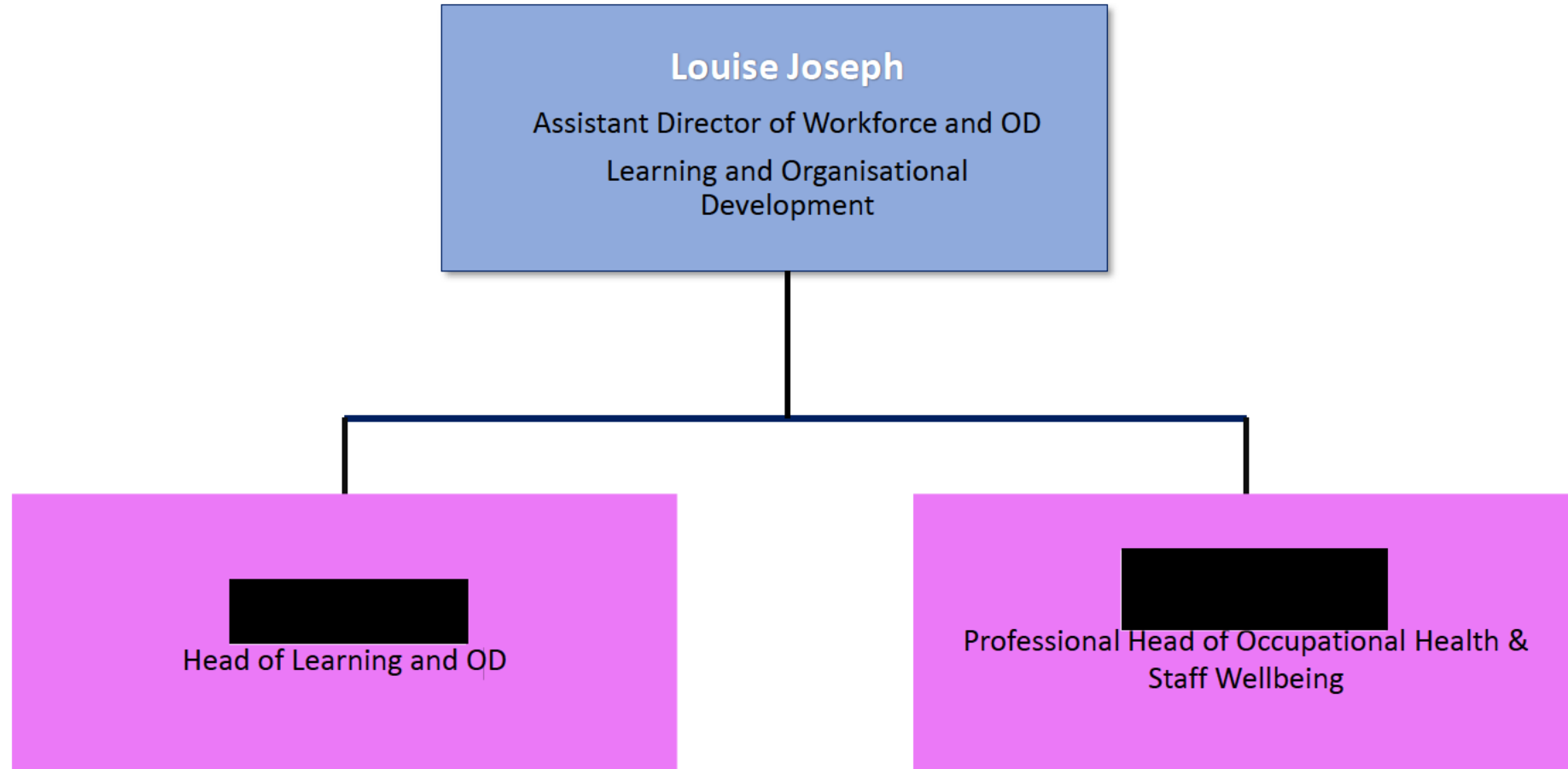
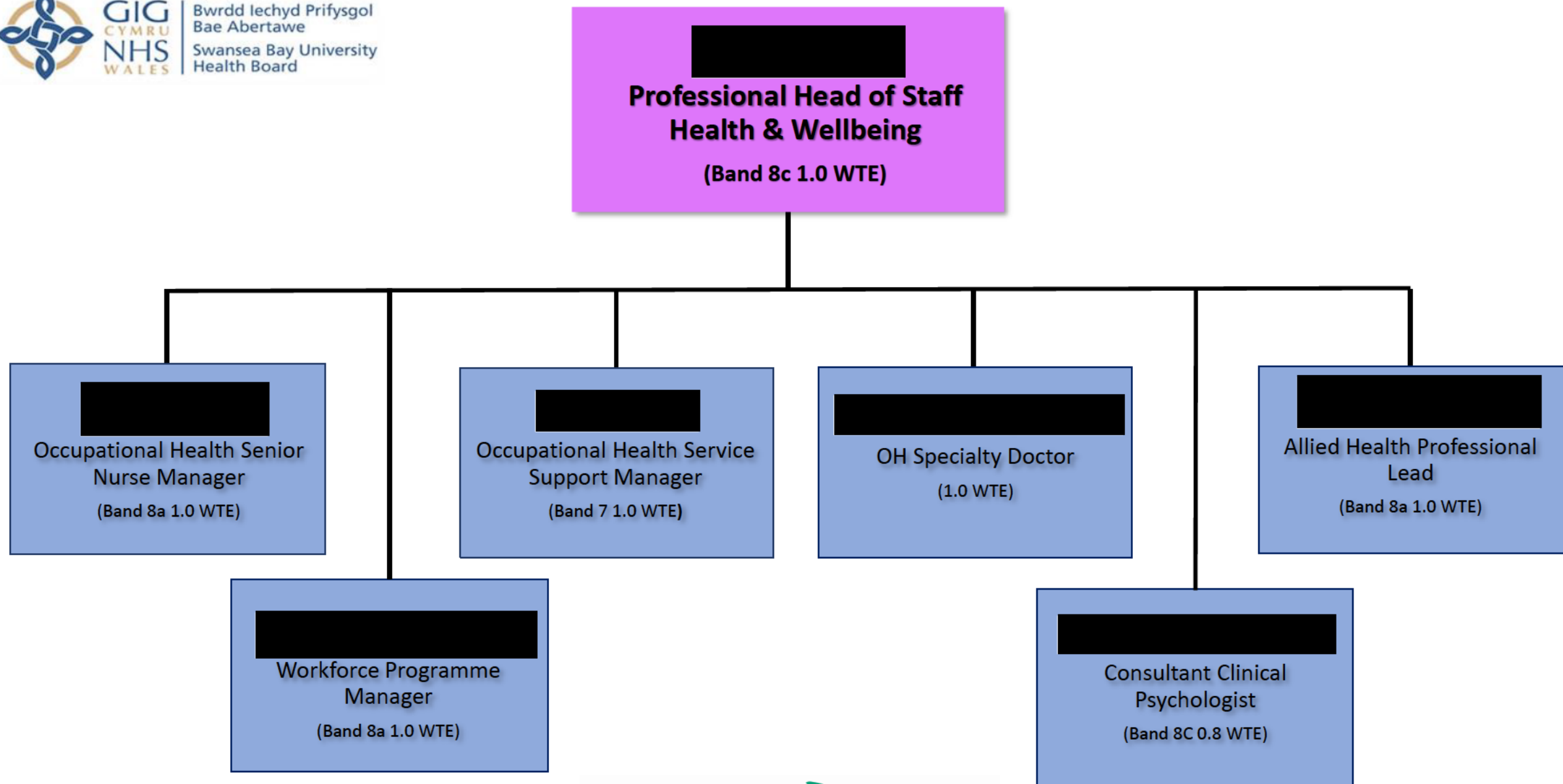




GIG
CYMRU
NHS
WALES

Bwrdd Iechyd Prifysgol
Bae Abertawe
Swansea Bay University
Health Board





**Occupational Health Senior Nurse
Manager
(Band 8a 1.0 WTE)**

**Occupational Health Nurse
Advisor
(Band 6 1.0 WTE)**

**Senior Occupational Health
Nurse Advisor
(Band 7 1.0 WTE)**

**Senior Occupational Health
Nurse Advisor
(Band 7 1.0 WTE)**

**Occupational Health Nurse
Advisor
(Band 6 1.0 WTE)**

**Occupational Health Nurse
(Band 5 1.0 WTE)**

**Occupational Health Nurse
(Band 5 1.0 WTE)**

**Occupational Health Nurse
(Band 5 0.8 WTE)**

**Occupational Health Nurse
(Band 5 0.4 WTE) *Seconded to
MVC Until 03/2022***

**HCSW
(Band 3 0.8 WTE)**

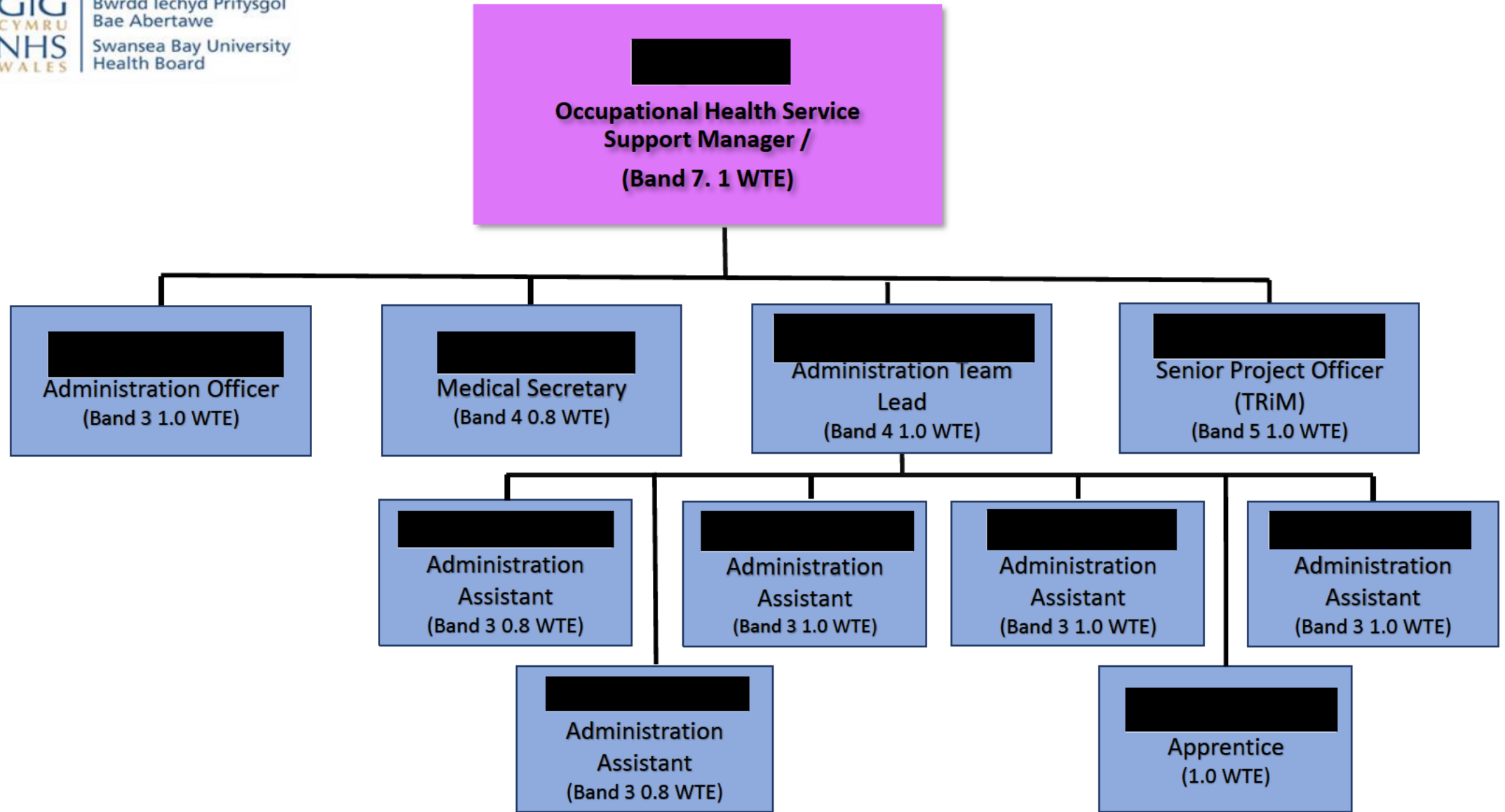
**HCSW
(Band 3 1.0 WTE)**

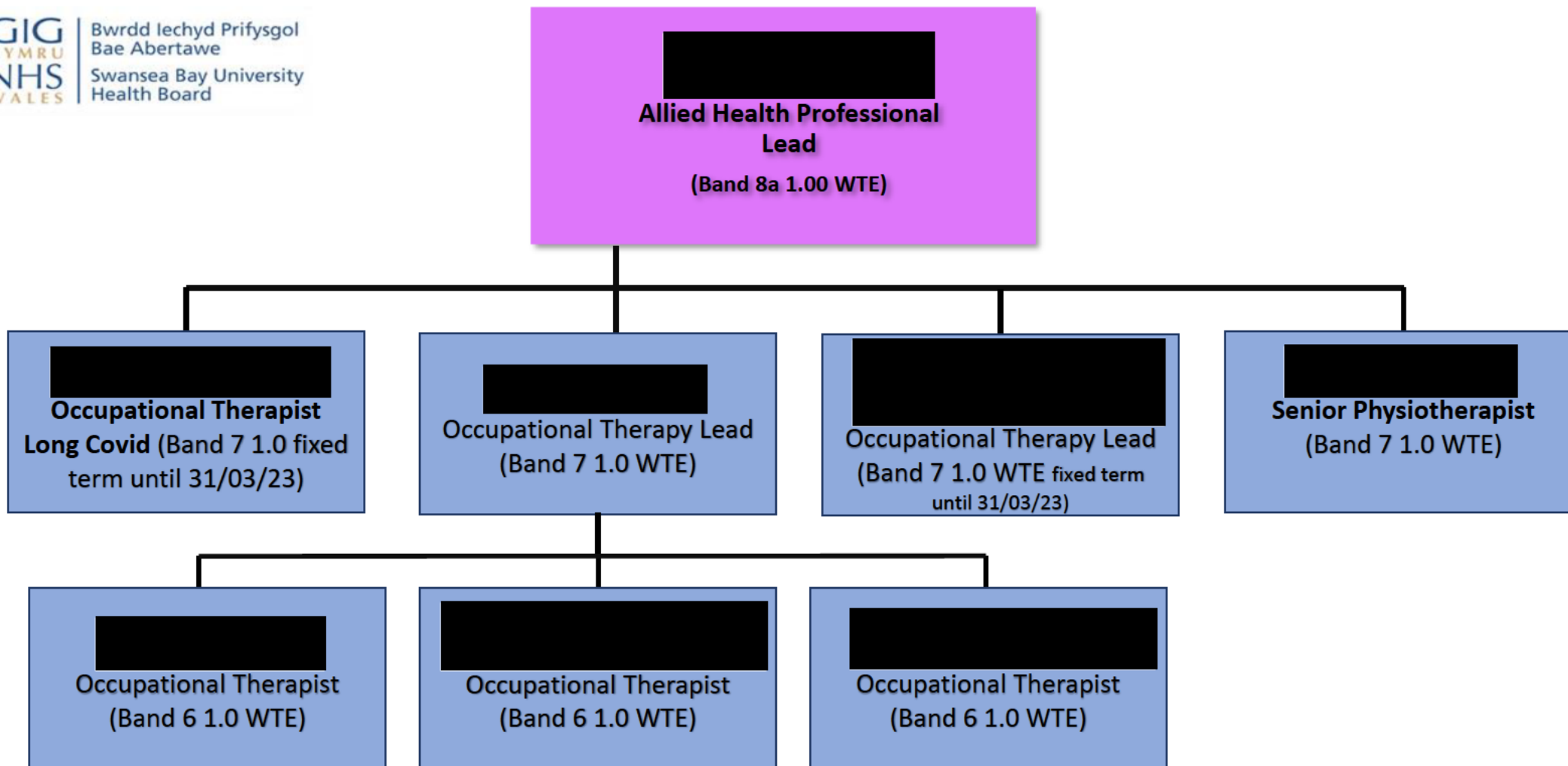




GIG
CYMRU
NHS
WALES

Bwrdd Iechyd Prifysgol
Bae Abertawe
Swansea Bay University
Health Board





[REDACTED]

**Staff Wellbeing Service Workforce
Programme Manager
(Band 8a 1.0 WTE)**

[REDACTED]

**TRiM Project Manager
(Band 7 0.4 WTE)**



