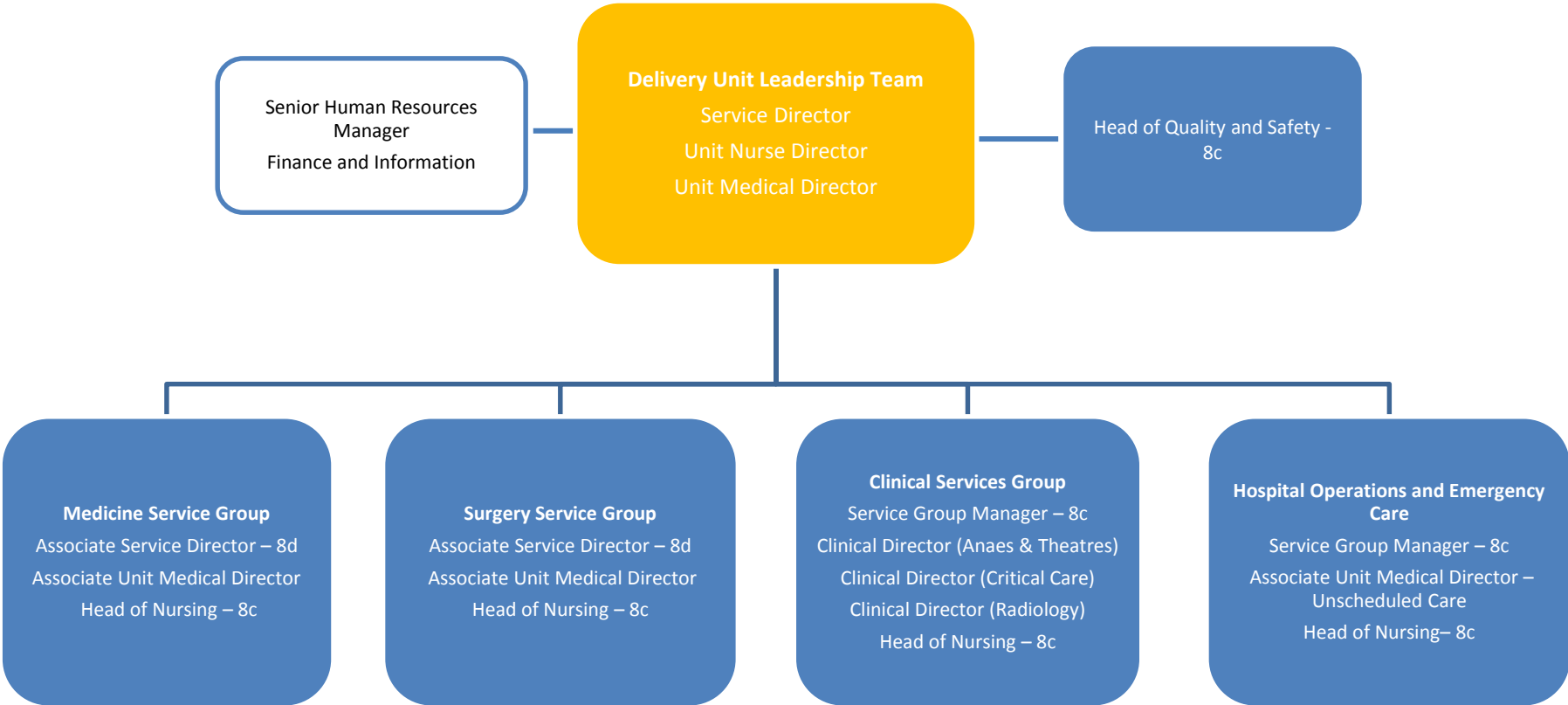


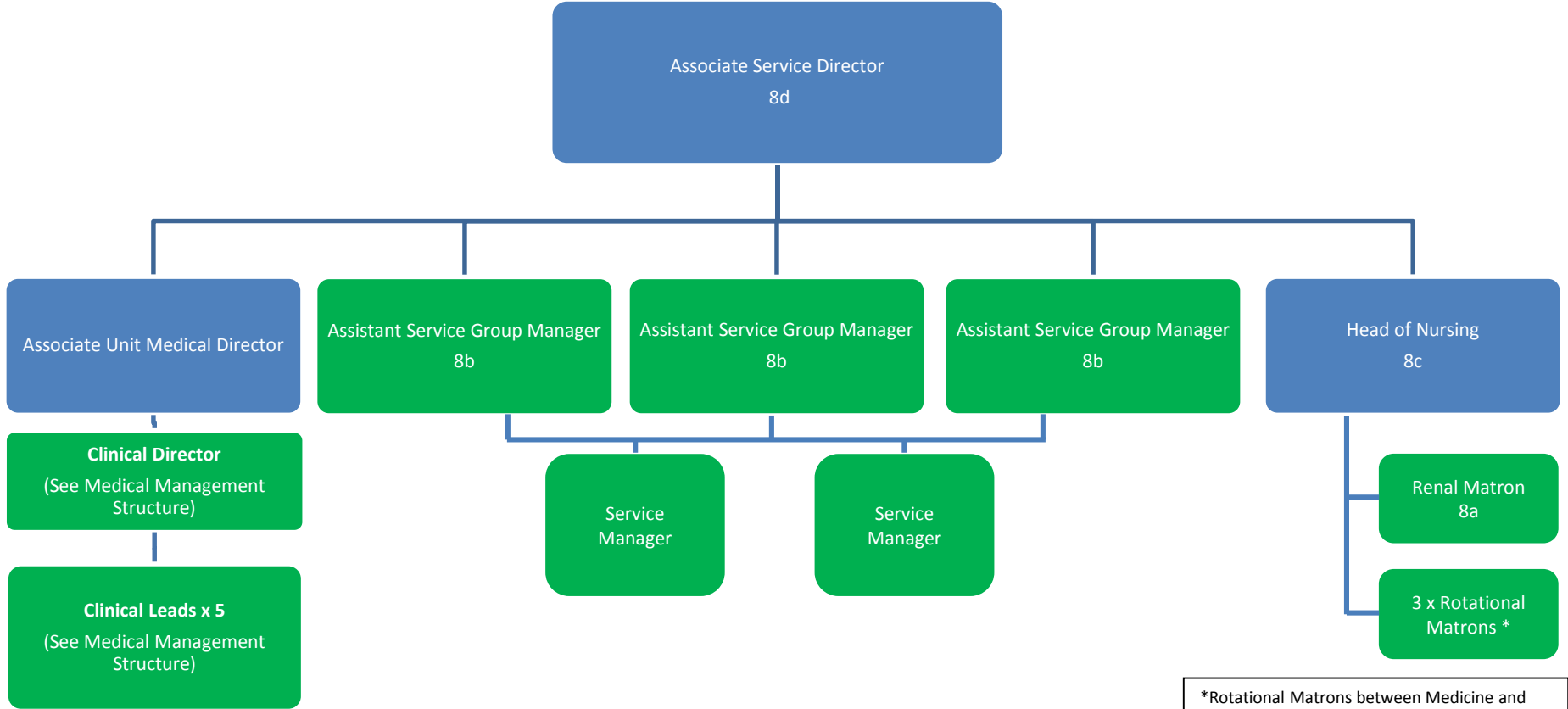
# Structure for Morriston Hospital Delivery Unit



- Delivery Unit Senior Leadership Team
- Layer 1 posts
- Not affected in this consultation

# Medicine Service Group

Specialist and Regional Medicine including Renal, Neurosciences, Acute Medicine, OPS, Stroke, Respiratory Medicine, General Medicine, Gastroenterology

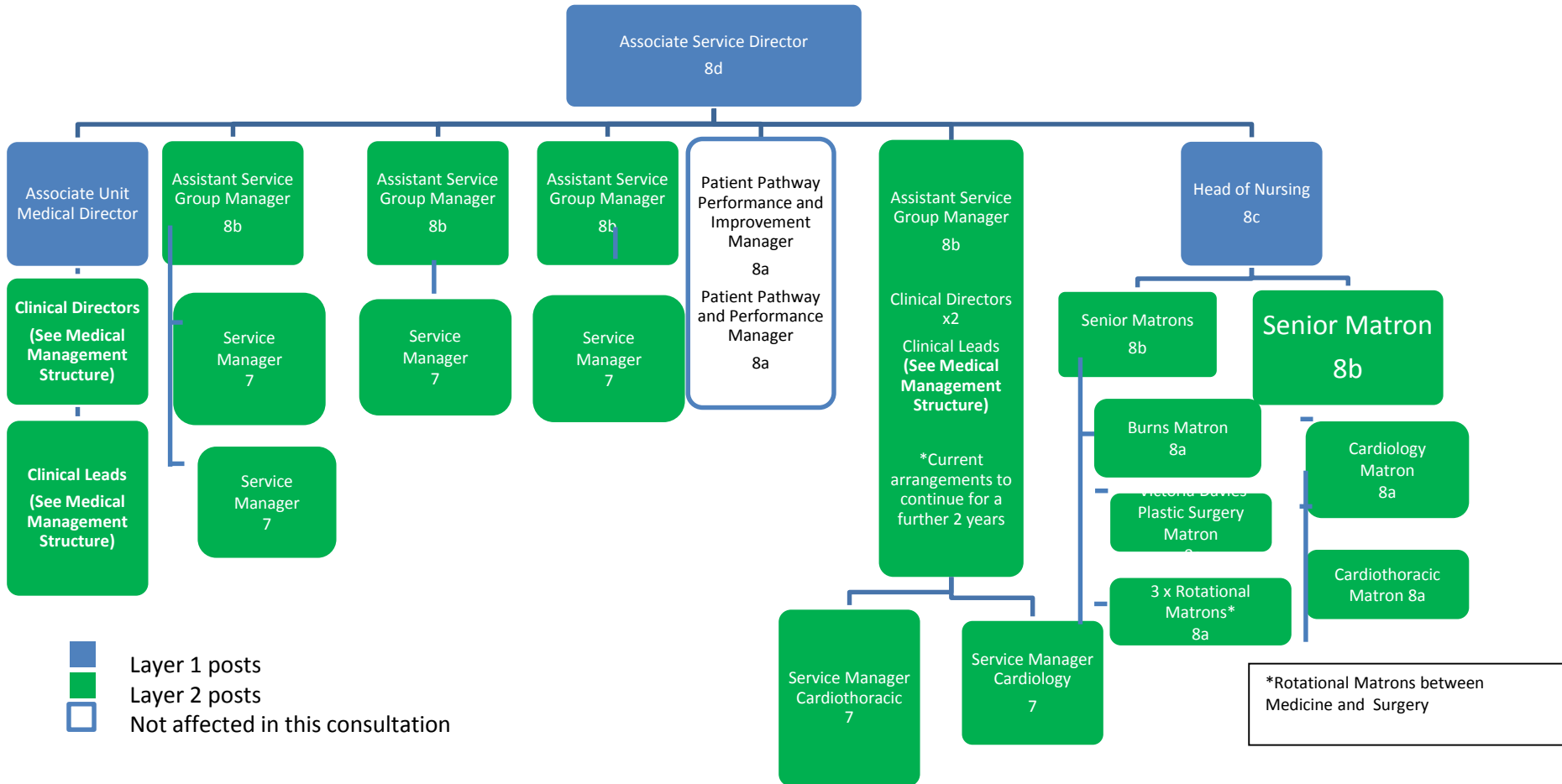


■ Layer 1 posts  
■ Layer 2 posts

\*Rotational Matrons between Medicine and Surgery

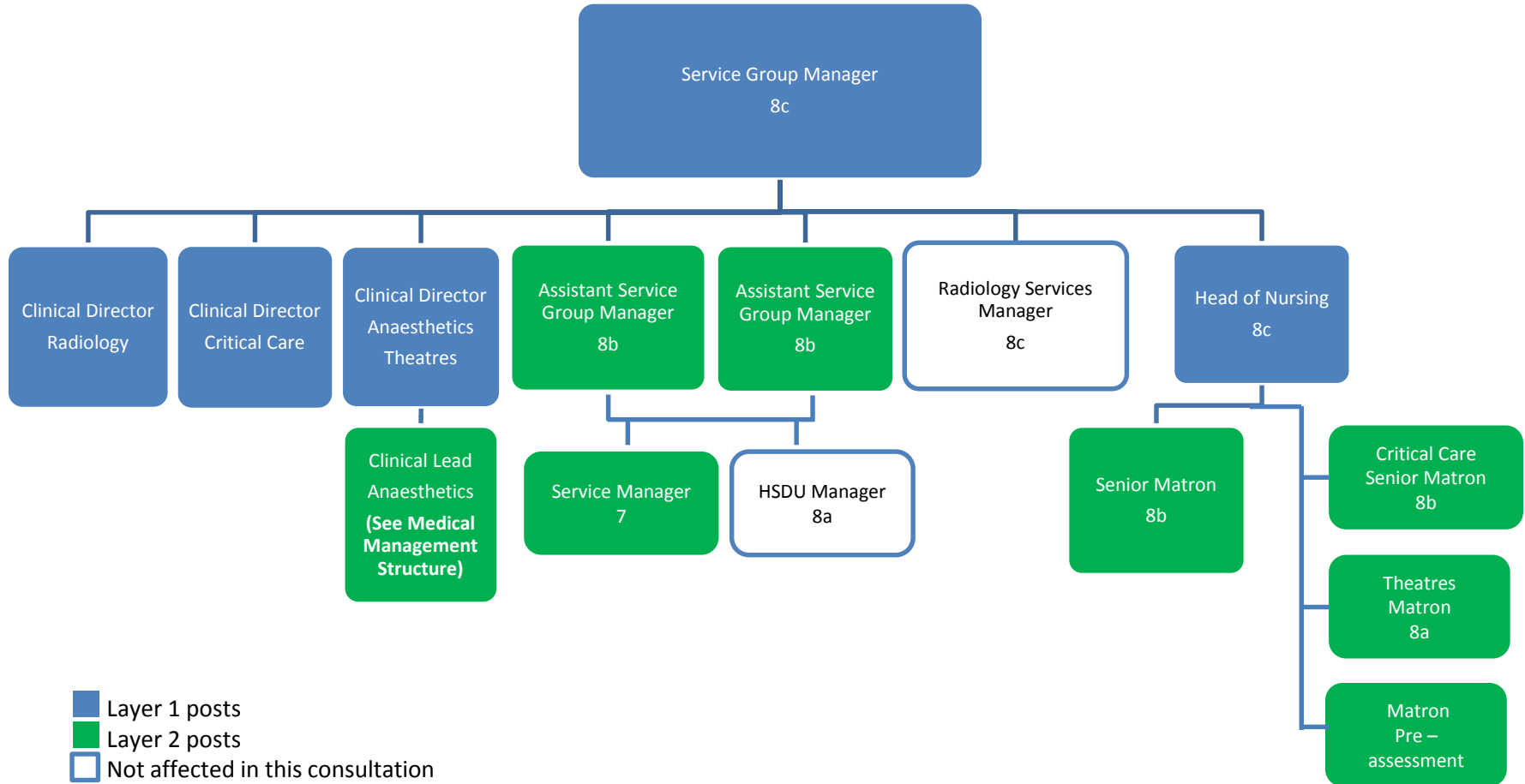
# Surgery Service Group

General Surgery, ENT, Colorectal, Vascular, Urology, OMFS, Cleft, Spinal, T&O, Plastic Surgery, Burns Unit including ITU, Cardiac Centre including ITU



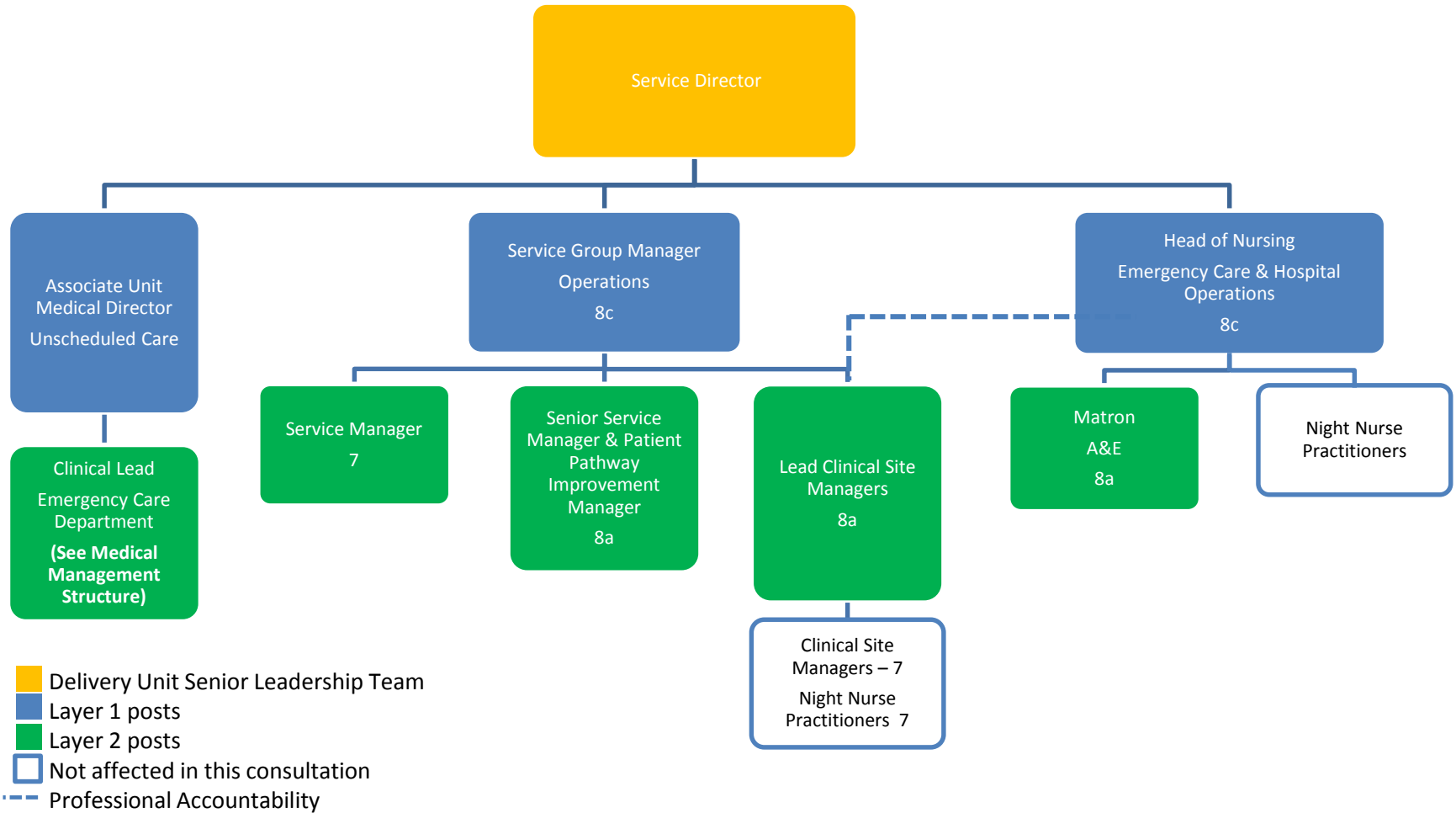
# Clinical Services Group

Theatres, Radiology, Critical Care, Anaesthetics, HSDU, Pre-assessment, Pain & Line Service

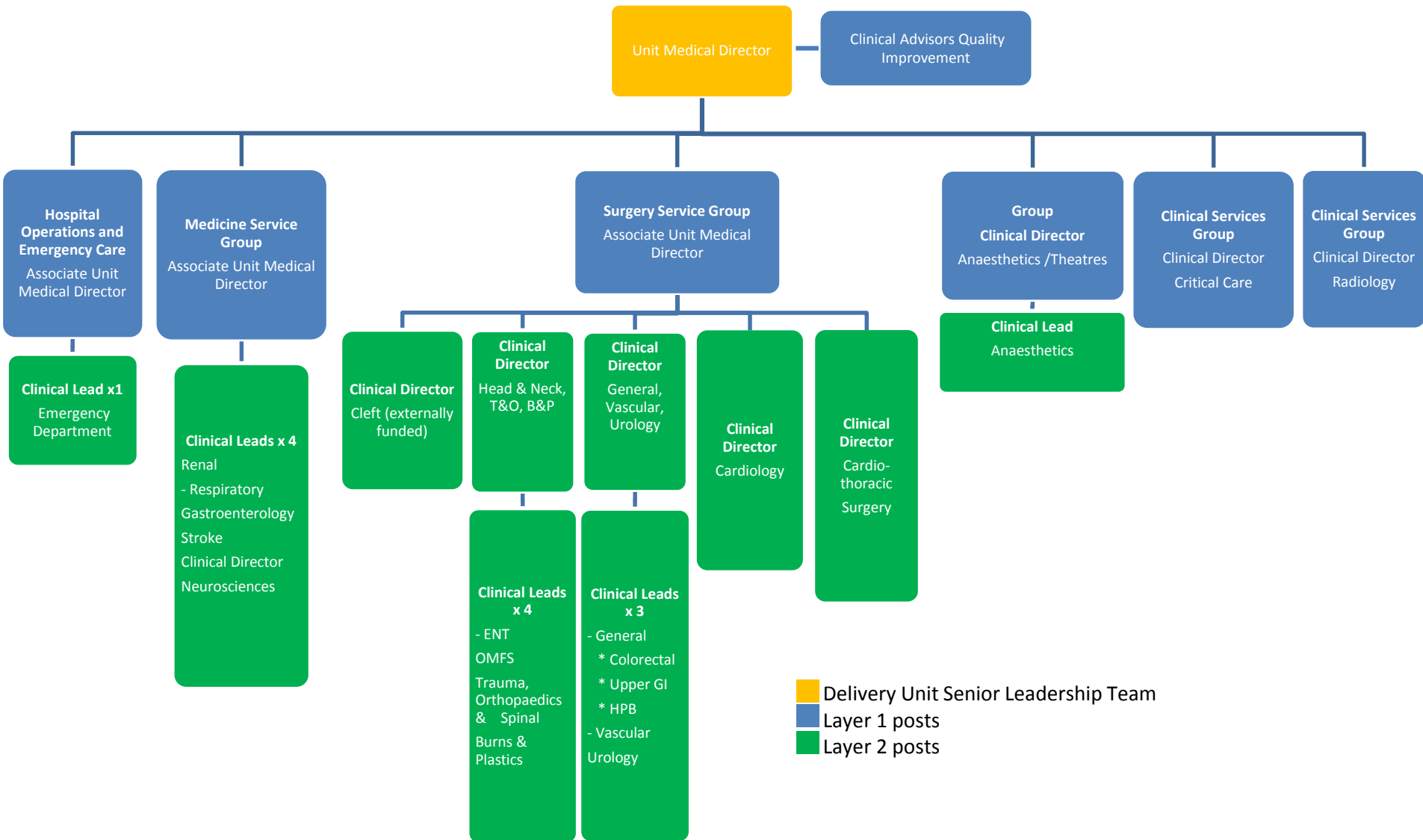


# Emergency Care & Hospital Operations

Emergency Care Service, Discharge Liaison Nursing, Night Nurse Practitioners, Patient Flow, Unscheduled Care Delivery (Unit Wide), Emergency Planning



# Medical Management Structure



Unit Medical Director

Clinical Advisors Quality Improvement

**Hospital Operations and Emergency Care**  
Associate Unit Medical Director

**Medicine Service Group**  
Associate Unit Medical Director

**Surgery Service Group**  
Associate Unit Medical Director

**Group Clinical Director**  
Anaesthetics /Theatres

**Clinical Services Group**  
Clinical Director  
Critical Care

**Clinical Services Group**  
Clinical Director  
Radiology

**Clinical Lead x1**  
Emergency Department

**Clinical Leads x 4**  
Renal  
- Respiratory  
Gastroenterology  
Stroke  
Clinical Director  
Neurosciences

**Clinical Director**  
Cleft (externally funded)

**Clinical Director**  
Head & Neck, T&O, B&P

**Clinical Director**  
General, Vascular, Urology

**Clinical Director**  
Cardiology

**Clinical Director**  
Cardio-thoracic Surgery

**Clinical Lead**  
Anaesthetics

**Clinical Leads x 4**  
- ENT  
OMFS  
Trauma, Orthopaedics & Spinal  
Burns & Plastics

**Clinical Leads x 3**  
- General  
\* Colorectal  
\* Upper GI  
\* HPB  
- Vascular Urology

■ Delivery Unit Senior Leadership Team  
■ Layer 1 posts  
■ Layer 2 posts